



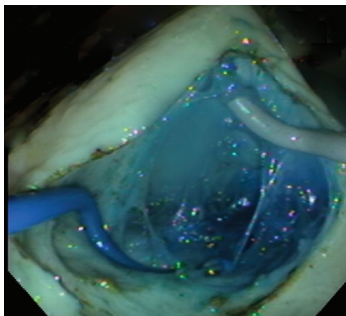
Endoscopic Tissue Manipulator

Advancing endoscopic visualization with dynamic tissue manipulation

The GripTract™-GI Endoscopic Tissue Manipulator (GripTract) is a single-use device that connects to the distal end of an endoscope without occupying the working channel. GripTract assists clinicians with optical visualization, diagnosis, and endoscopic treatment.

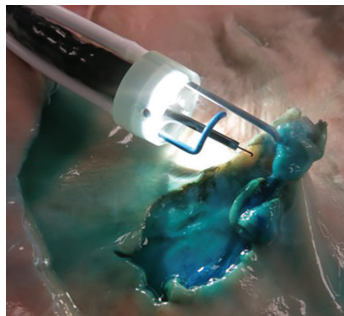
GripTract Model GT-101 operates in the large intestine with any standard endoscope with an outer diameter of 11.5 - 12 mm and working length of 168 - 170 cm.

GripTract Fingers can move in, out, and rotate for use in a variety of ways including:



Dynamic Retraction

GripTract Fingers (one or both) can be inserted into an incision and be rotated to provide tissue retraction offering a clear view and access to the plane of dissection.



Independent Knife Movement

GripTract Fingers can move the cutting tool without advancing or moving the camera, thereby offering an additional approach to endoscopic treatment.



Stabilizing the Endoscope

GripTract Fingers can stabilize the distal end of the endoscope improving visualization during procedures.

Assists with:

- + Dynamic tissue retraction and manipulation
- + Optical visualization
- + En bloc dissection

Challenging endoscopic interventions require extensive training and repetition. GripTract may help to simplify procedures through clearer en bloc dissection, thus expanding the range of treatments that clinicians can offer patients.

FDA Clearance Number: K231254



Innovative motion + Positive outcomes

CONTACT SALES

Actuated Medical, Inc.
+1 (814) 355-0003 x117
info@actuatedmedical.com
www.ActuatedMedical.com



Call us for more info
+1(814) 355-003 X117



1100793174 - 003
Pat. actuatedmedical.com/ip